

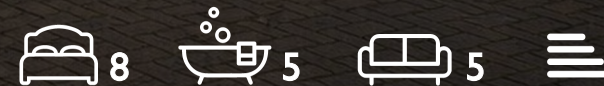
WE VALUE



YOUR HOME



Churchfield Lane, Benson
Offers In Excess Of £1,500,000



This impressive detached home offers a striking front aspect with gated driveway and generous parking, creating an immediate sense of arrival. Designed with versatility in mind, the property incorporates two self-contained apartments/annexes within the main house, ideal for multi-generational living, guest accommodation or potential income, while still allowing easy connection to the principal home.

The ground floor centres around a spacious open-plan kitchen/breakfast room, complete with island bar and ample storage, providing a practical and sociable hub. From here, the home continues into a bright dining room/conservatory, where Velux windows draw in natural light throughout the day. The lounge features a log burner set within a brick surround and a bay, with double doors opening directly onto the rear garden, creating a seamless link between inside and out.

The landscaped rear garden offers a variety of seating areas along with a summer house, providing an ideal setting for relaxing or entertaining. Two utility rooms add further practicality, one of which is currently arranged as a dog grooming room, alongside a downstairs cloakroom.

Upstairs, a charming landing with an arched window leads to five double bedrooms. The principal bedroom benefits from a walk-in wardrobe, two bedrooms enjoy en-suite facilities, and there is also a family bathroom serving the remaining rooms.

In addition, the first-floor apartment/annexe comprises a kitchen/living room, two bedrooms and a shower room. The ground-floor annexe provides a kitchen/living room, one bedroom and en-suite, offering excellent flexibility for extended family or independent living.

Further benefits include a double garage and ample off-street parking, completing this substantial and adaptable home in a particularly desirable Benson setting.

What The Owner Says...

"This has truly been our dream home. We'll be very sorry to leave, but it's time for us to downsize. A perfect place to live."





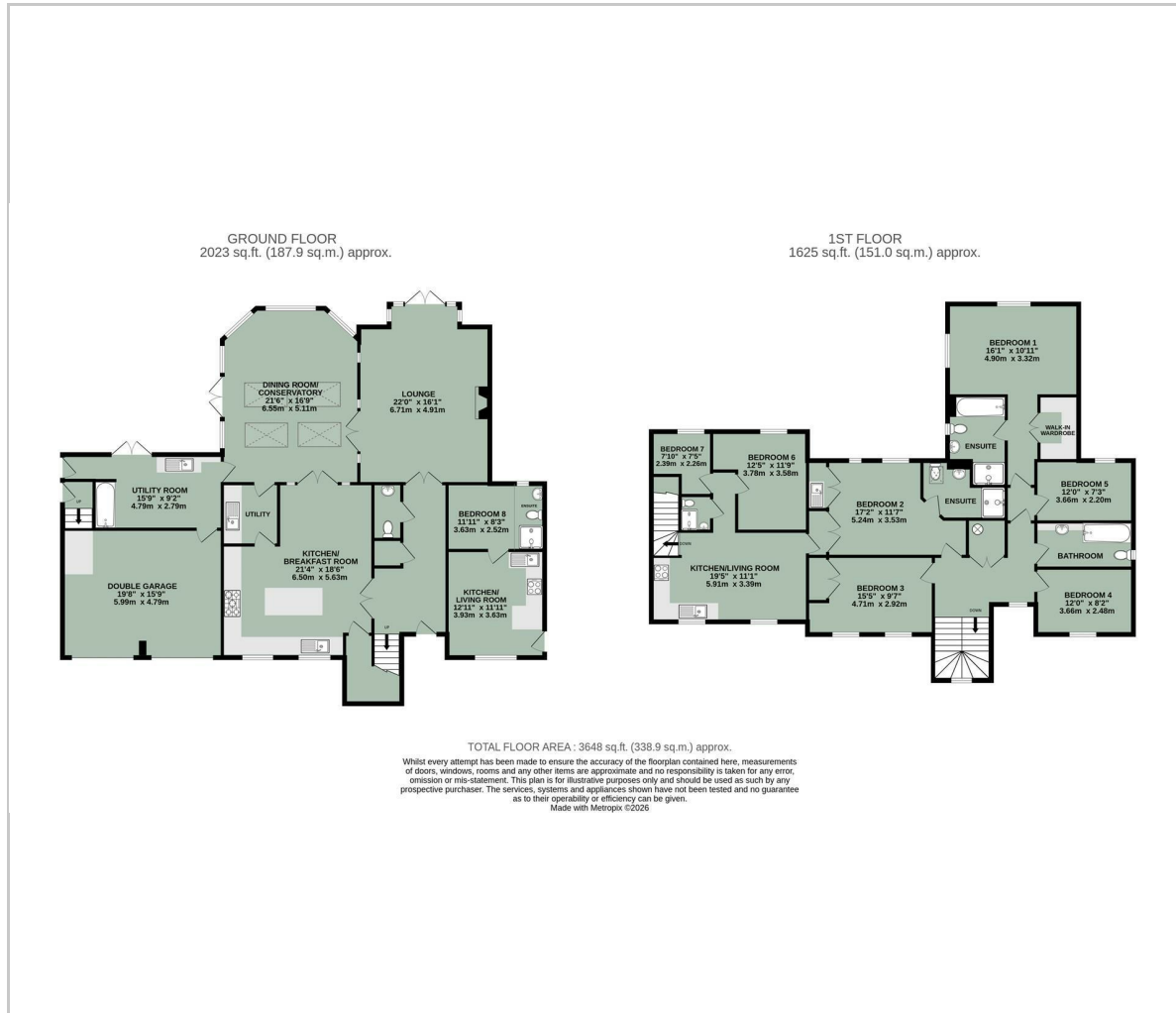
- Impressive detached eight bedroom home
- Beautifully designed Dining Room/Conservatory to rear aspect
- Versatile layout with two Annexes/Apartments for a variety of uses
- Private & landscaped rear garden with a summer house
- Three En-suites, Family Bathroom & downstairs Cloakroom
- Double garage & gated driveway providing ample off-street parking
- Walking distance to Benson's pubs, shops & amenities
- Open-plan Kitchen/Breakfast Room with Island Bar



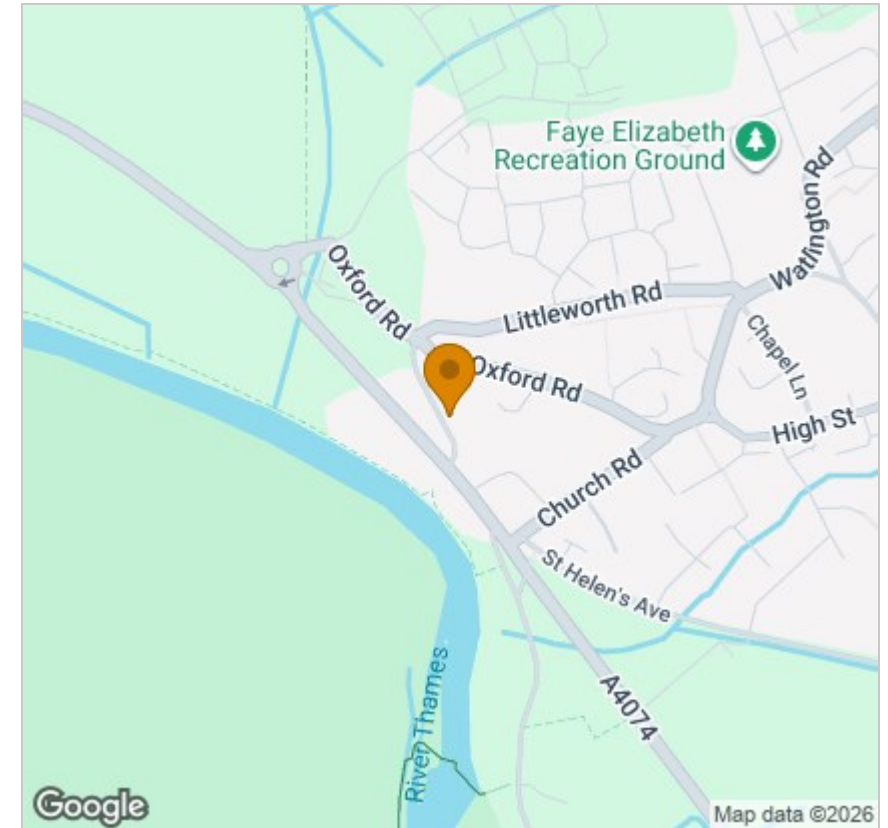
Energy Efficiency Rating			Environmental Impact (CO ₂) Rating		
	Current	Potential		Current	Potential
Very energy efficient - lower running costs			Very environmentally friendly - lower CO ₂ emissions		
(93 plus) A			(92 plus) A		
(81-91) B			(81-91) B		
(69-80) C			(69-80) C		
(55-68) D			(55-68) D		
(39-54) E			(39-54) E		
(21-38) F			(21-38) F		
(1-20) G			(1-20) G		
Not energy efficient - higher running costs			Not environmentally friendly - higher CO ₂ emissions		
England & Wales	EU Directive 2002/91/EC		England & Wales	EU Directive 2002/91/EC	

Energy Efficiency Graph

Floor Plan



Area Map



Viewing

Please contact our In House Sales & Lettings Office on 01491 839999 opt.1
if you wish to arrange a viewing appointment for this property or require further information.

These particulars, whilst believed to be accurate are set out as a general outline only for guidance and do not constitute any part of an offer or contract. Intending purchasers should not rely on them as statements of representation of fact, but must satisfy themselves by inspection or otherwise as to their accuracy. No person in this firm's employment has the authority to make or give any representation or warranty in respect of the property.

28 St Martins Street, Wallingford, Oxfordshire, OX10 0AL
Tel: 01491 839999 opt.1 Email: sales@inhouseestateagents.co.uk www.inhouseestateagents.co.uk